



## DAN HILL FARM RETIREMENT AUCTION

### Saturday, April 5<sup>th</sup> – Starting @ 10 AM

5476 Road 61 Torrington, WY

**Directions:** From Henry NE, go south on the Holloway Road 3 miles to County Road D. Go west on CR D as it changes to County Road 56 for 1 3/4 miles to County Road 61. Take a left on CR 61 and the sale will be on your immediate right. From Lyman NE, go west on Highway 92 1 3/4 miles to County Road 61. Turn and go North on 61, 2 1/2 miles to the sale sight. Watch for the signs.

**Auctioneer's Note** Dan is retiring from farming and is going to let go of a nice line of equipment. He has taken pride in the care and upkeep of this line and buyers will appreciate the condition of the items to be sold. Please note that the shop offering will be complete and standard for any farm shop that kept all the equipment serviced, repaired, and in the field. A bank letter of credit or proof of secured funds will be required before any purchases that exceed \$10,000 can leave the premises. Sale day announcements will take precedence over all announcements either written or implied. Lunch will be available at the sale site. Not responsible for accidents. Terms & conditions will include cash, good check, or credit card.

#### Tractor, Equipment, Pickup

- \* John Deere 5055E, MFWD tractor. Equipped w/ 3 pt., twin remotes, fender extensions, canopy, mid hyd. For a loader, loader brackets attached, 12/12 reverser shuttle trans. 14.9-28 Rear tires. Nice tractor that sells w/ 409 hrs.
- \* Auto Align Bale Skoop 12SR by Pro Ag Designs SN 12-T-0781
- \* Kewanee 15' culti-packer w/ crow feet fronts & solid rears. All tires are good



- \* John Deere 230 folding disk. SN 020962
- \* John Deere 450 grain drill. 7.5" spacings, dbl. press wheels, grass/alfalfa boxes.
- \* Brown hyd. Box scraper. Model DS10 SN 98082
- \* OMI Mfg. folding meadow harrow cart. SN 000914
- \* (2) 10' x 4' meadow drags. New & still in a ball
- \* Case IH Model 10, 7 shank sub-soiler. SN 0360060
- \* 1999 Ford F250 SC pickup. 4WD, auto trans. Triton V10 gas eng. Sells w/ 83K original miles
- \* dump trailer w/ dump truck box, hyd. Lift, & on truck running gear. Will hitch to tractor quick hitch
- \* John Deere sickle bar mower W/ A 9' KNIFE on a transport. SN E00450X701244
- \* set of bucket mount pallet forks on HD head. Model FL3000

- \* Culverts: (2) 24" X 23' culverts that can be connected & 18" X 24'
- \* Great Bend 760 loader SN 21-17549
- \* 8 pack hay head
- \* Prestige Ditch cleaner
- \* Eversman ditcher SN 16754
- \* Set of Case suitcase weights on a mounting bracket along w/ a set of hub weights, & a set of wheel weights
- \* 18.4-38 tractor tire on a 9 hole rim
- \* DEMCO 3 pt. mount sprayer. 300 gal. tank, 30' of boom, handgun & fully remote w/ cab controls



#### 3 point & Skid loader attachments

- \* FFC Model 446005A1 skid loader mount brush/trash grapple head. SN H067733
- \* skid loader mount snow blade. SN SSSB140700570
- \* 3 pt. mount post hole digger w/ 10" auger
- \* Rhino TW15, 5' rotary mower
- \* Rhino 3 pt. back blade w/ side to side & front to back adj. SN 15674 Model R950
- \* (2) 3 point quick hitches w/ 1 by SpeeCo
- \* PTO driven rotary snow blower



#### Fuel Tank, fencing, & panels

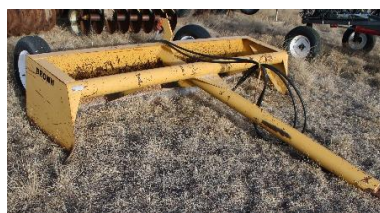
- \* 1000 gal. fuel tank w/ Fill Rite elect. pump
- \* Single axle utility trailer w/ a tiltbed
- \* (10) chain link dog panels that are 10' long along w/ mult rolls of chain link fencing, 7 gates, & offering of top rail
- \* Farm Master panel gates: (2) 12' gates & an 8' gate along w/ 14' galv. Gate
- \* pile of hog panels
- \* fencing materials: rolls of woven wire, 2 rolls of hand rolled bar wire, electric. Fence wire,
- \* ant. Manure spreader w/ steel wheels
- \* asst. cement posts
- \* Tarter sheep/goat hay feeder
- \* oval galv. Water tank

#### Shop, Camping, Household, & Misc.

- \* Shop items that will include a complete set of tools necessary to operate a farm shop incl. hand tools, cherry picker, parts washer, welder, oxy-acetylene torch, pressure washer, drill press, chainsaws
- \* Magna Force upright compressor w/ 80 gal. tank & 5 HP motor
- \* offering of log chains
- \* semi pull straps/tie down straps
- \* roto tiller
- \* offering of asst. camping supplies
- \* misc. household items TBD by sale time

#### Alfalfa Hay

- \* 2024 alfalfa hay. 12 bales of 3<sup>rd</sup> cutting & 10 bales of 4<sup>th</sup> cutting in 3'X4' bales

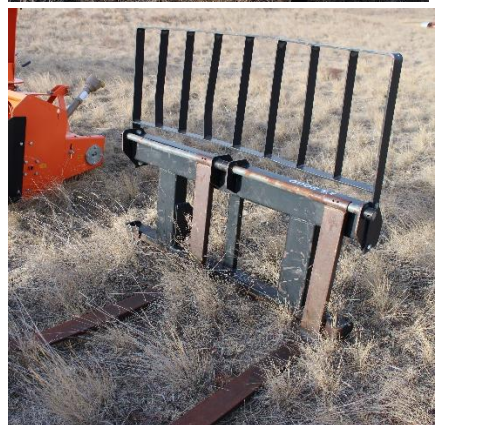


MCNAMEE AUCTION CO, LLC

307-532-4976 or 307-534-5156

www.mcnameeauctioncompany.com













**Late consignments to this auction**  
 \* Powder River squeeze chute w/ steel floor  
 \* 2019 Bawoo trac skid loader. Sells w/ bucket & under 700 hours.

